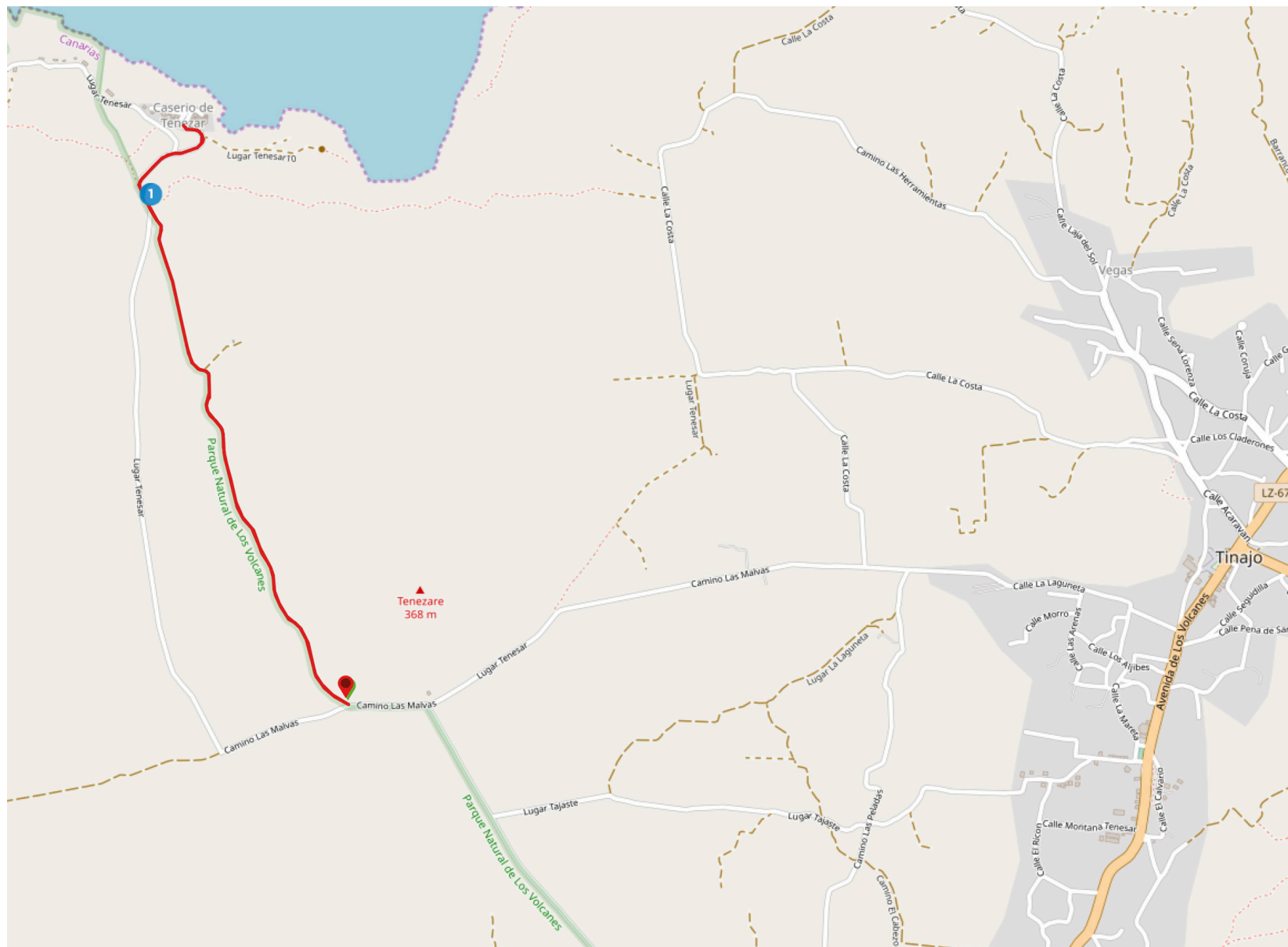


Tenesar

Distance - 5¼ km (3¼ miles) Ascent: 130m (427ft)

Walk 11



— - Walk

Disclaimer:
This route was correct at time of writing. However, alterations can happen if development or boundary changes occur, and there is no guarantee of permanent access. These walks have been published for use by site visitors on the understanding that neither HPB Management Limited nor any other person connected with Holiday Property Bond is responsible for the safety or wellbeing of those following the routes as described. It is walkers' own responsibility to be adequately prepared and equipped for the level of walk and the weather conditions and to assess the safety and accessibility of the walk.

Tenesar

Distance - 5¼ km (3¼ miles) Ascent: 130m (427ft)

Walk 17

Tenesar is a hamlet perched on the coast close to the Timanfaya National Park. This easy out and back route follows a dirt roadway between the edge of a lava field and Montana Tenezar (369m - 1211ft). Off the beaten track, but entirely easy to follow and good underfoot. The ascent is all at gentle gradients.

Start/car parking:

Space for parking beside a vehicular barrier at the start of the dirt road. Drive to Tinajo, from the south on L220 turn left at the roundabout, then right in less than a quarter of a mile the calle La Guneta out of the village. Pass an isolated farmhouse in about two miles. The parking is less than a quarter mile further on before the tarmac road goes onto the lava flow.

Refreshments:

None on route.

WALK

Pass the barrier and walk along the broad dirt road, descending gently but steadily, heading for and eventually passing the base of a shapely little unnamed offshoot of Montana Tenezar. Despite the track being close to the edge of a huge lava field, the vegetation is reasonably varied. Pass an old quarry on the right, then another on the left. As the track bends to the left, there is a disused building to the right. Thick stone walls are evidence of field clearance. Continue the descent towards the buildings of Panesar and the sea.

1. Pass a chair vehicular barrier, join the tarmac Panesar access road and continue downhill to the hamlet. There are extensive coastal views.

Enjoy a picnic in this remote place and return by the same route. *An alternative is to stay with the road at point 1.*

Note: It would be a great help to future walkers if you could record any inaccuracies you come across during this walk and report them to reception so that appropriate amendments can be made. Thank you for your help. *Happy walking.*